



USB Data Logger Interface Quick Installation Guide

Package Contents

- USB Interface Device
- Stereo Jack Cable
- 6" USB Extender Cable
- Data Logger Software on USB Flash Drive
- Quick Installation Guide

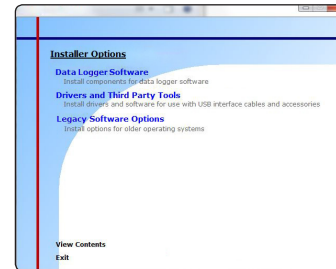


For XP SP3/Vista/Windows 7/Windows 8/Windows10

1 Install Software

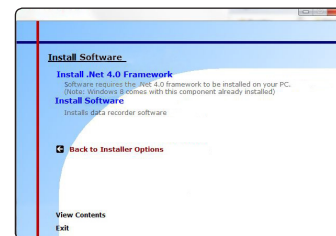
- A** Insert the Data Logger Software USB Flash Drive into an available USB port on your PC. Click the **Start** menu and choose **Computer or My Computer**. Browse to the Removable Disk drive corresponding to the USB port you selected.

For Windows 7 users, a dialog box may appear with a list of options. Select "Open Folder to View files". If you are not prompted, click the **Start** menu and choose **Computer or My Computer** and browse to the Removable Disk drive corresponding to the USB port you selected.



Once you locate the contents of the USB flash drive, click on the **auto-run** program file. A set-up screen will display with options as shown above.

- B** Click on the **Install Data Logger Software** link from the set-up screen to start the installation of the Data Logger Software. The **Install Data Logger Software** window will appear, click on the **Install Data Logger Software** link. Follow the on screen prompts to complete the installation. Click Back to Contents when completed. See the Software Manual or contact your account representative for additional information.



2 Connect the USB Data Logger Interface

- A** Connect the USB end of the Interface Device to the 6" USB extender cable (optional but recommended). Plug the opposite end of the extender cable into a USB port on the PC.



- B** Once the Interface Device is plugged in, a **New Hardware Found** message will appear on the PC. The new drivers will automatically configure for use with the Interface cable. A message will then appear that the new hardware is installed and ready to use.

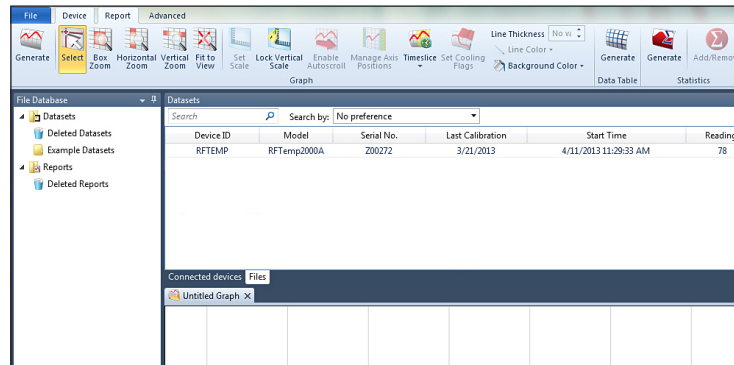


The installation of the USB data logger interface is complete.

Plug the stereo cable into the open jack on the Interface Device, the opposite end of the cable will be plugged into the data logger.

3 Test the Data Logger Interface Operation

- A To verify that the USB Interface drivers are installed properly, check to ensure the Data Logger Software can recognize a device.
- B When the interface cable is connected to the PC the blue LED power indicator light should be on. If the indicator light is **not** on, unplug the interface cable, wait 5 seconds and plug it back into the PC.
- C Start the Data Logger Software. (If necessary, see the software manual for additional information on the software)
- D Your device(s) will appear in the list displayed, select your device in this list and choose your desired start method.



Additional Information

For additional information or troubleshooting assistance, refer to the User Guide on the Data Logger Software USB Flash Drive, or contact your account representative.